



wanders.com



# Index

## 02-23 Gas

04-05	Lenga 500
06-07	Lenga 800
08-09	Koto
10-11	Douglas
12-13	Danta 500 / 800
14-15	Danta 1100 / 1400
16-17	Balsa
18	Tali
19	Square 40
20-21	Square 60G
22-23	Larix

## 24-47 Wood

26-27	Black Pearl Black Diamond
28-29	S black edition 60/75 Ruby
30-31	S 60 / 68 / 75 front
32-33	S 60 / 75 corner
34	Square 60 / 68 trilateral
35	Square 75 tunnel Jules
36-37	Elm
38-39	Oak
40-41	Platane
42-43	Pecan eco
44-45	Mata
46	Marvic
47	Peppel



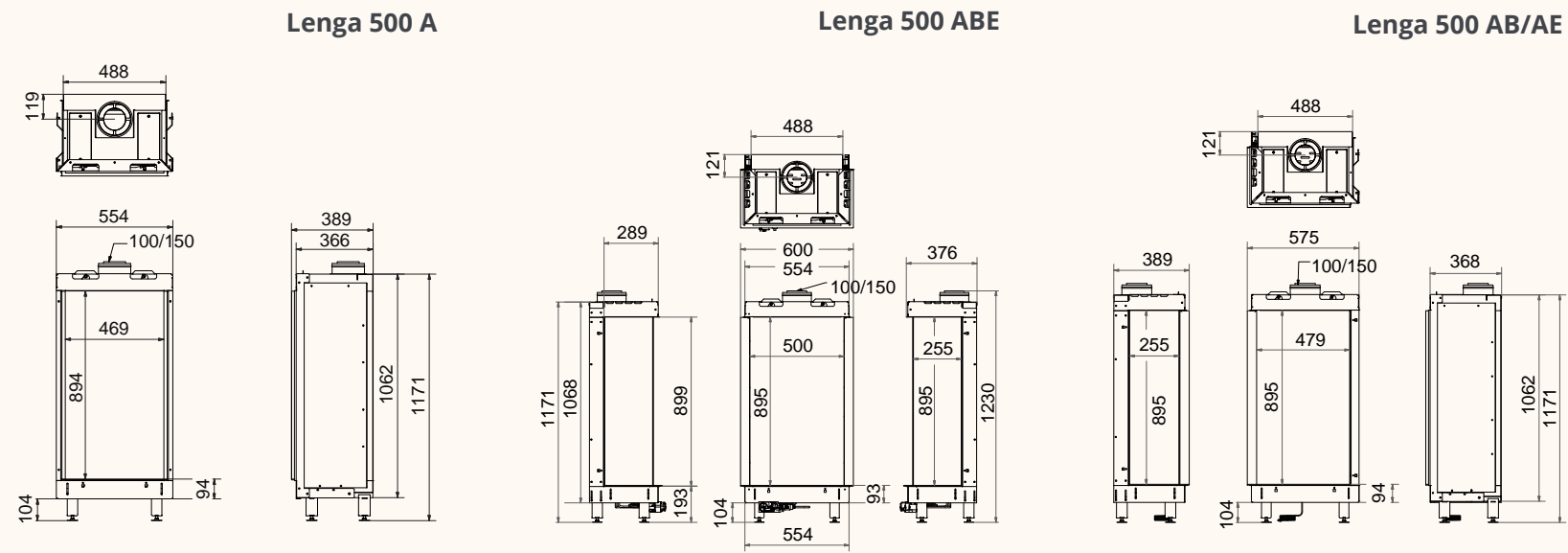


GAS



wanders  
fires & stoves

# Lenga 500



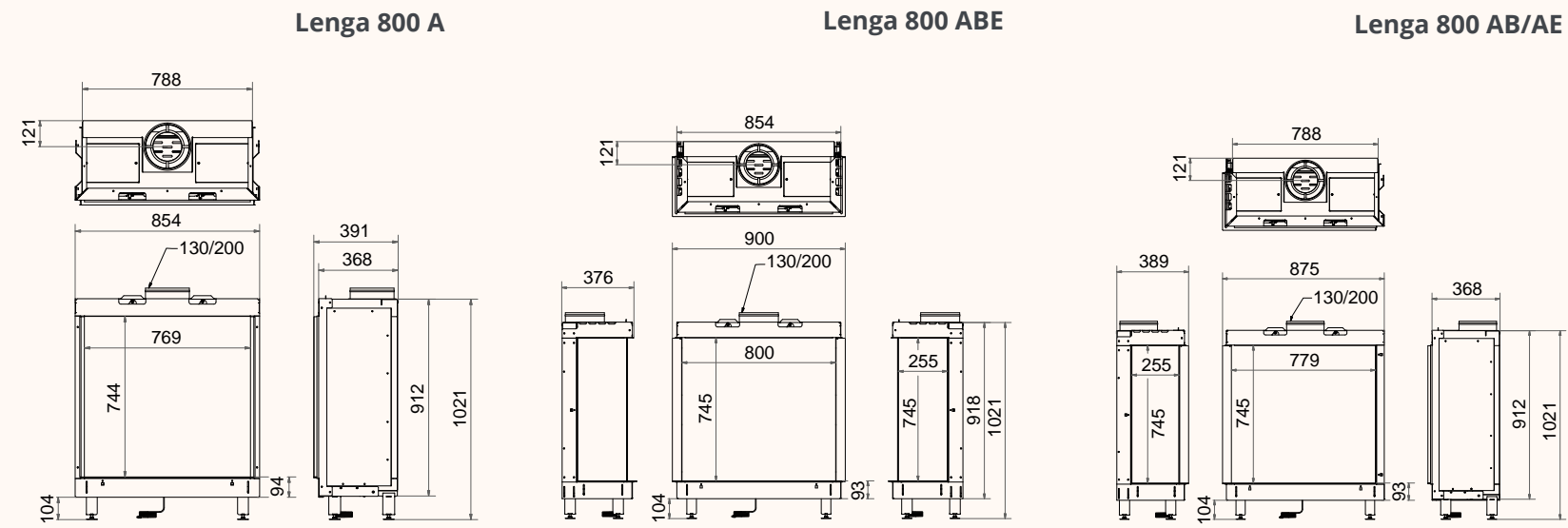
Black | In: 9,3 kW

- 100/150
- 89,8
- ECO

A++  
 A+  
 A  
 B  
 C  
 D  
 E  
 F  
 G

**wanders**  
fires & stoves

# Lenga 800



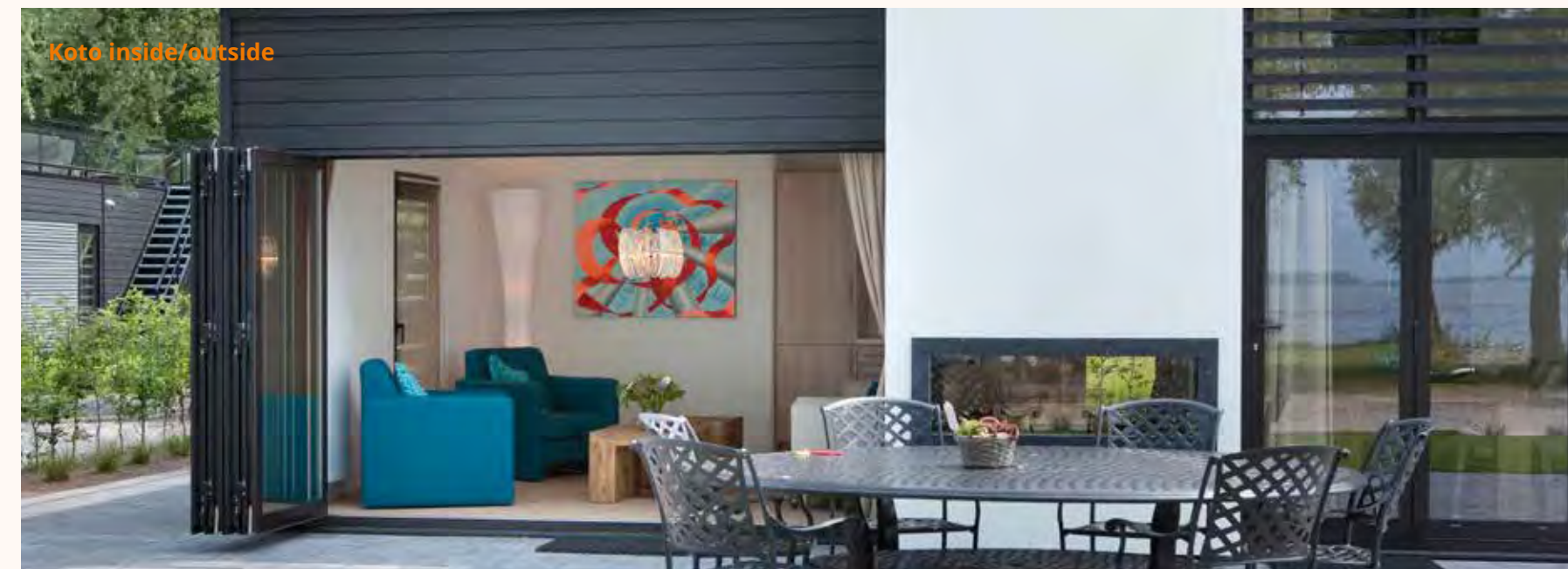
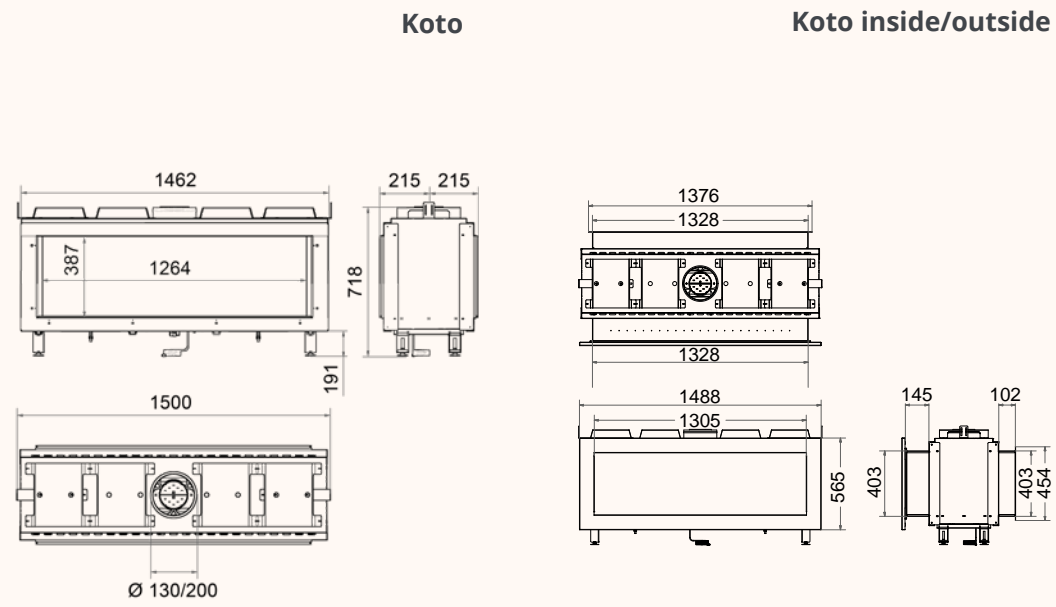
Black | In: 12,3 kW

- 130/200
- 90,3%
- ECO
- ECO

A++  
 A+  
 A  
 B  
 C  
 D  
 E  
 F  
 G

**wanders**  
fires & stoves

# Koto



Black | In: 11,7 kW

- P
- Ø 130/200
- % 87,5
- ECO

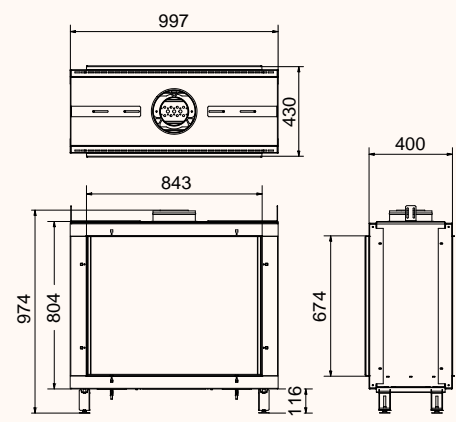
Energy efficiency scale:

- A++
- A+
- A
- B
- C
- D
- E
- F
- G

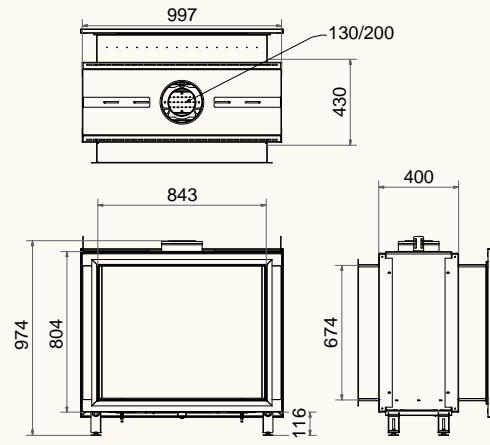
wanders  
fires & stoves

# Douglas

Douglas



Douglas inside/outside



Black | In: 10,0 kW

- 130/200
- 93,5%
- ECO
- P
- S
- Lock
- Wi-Fi
- Timer
- Smart

ECO

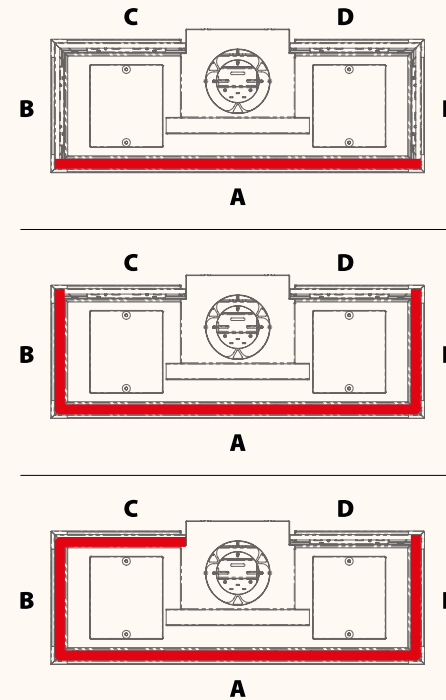
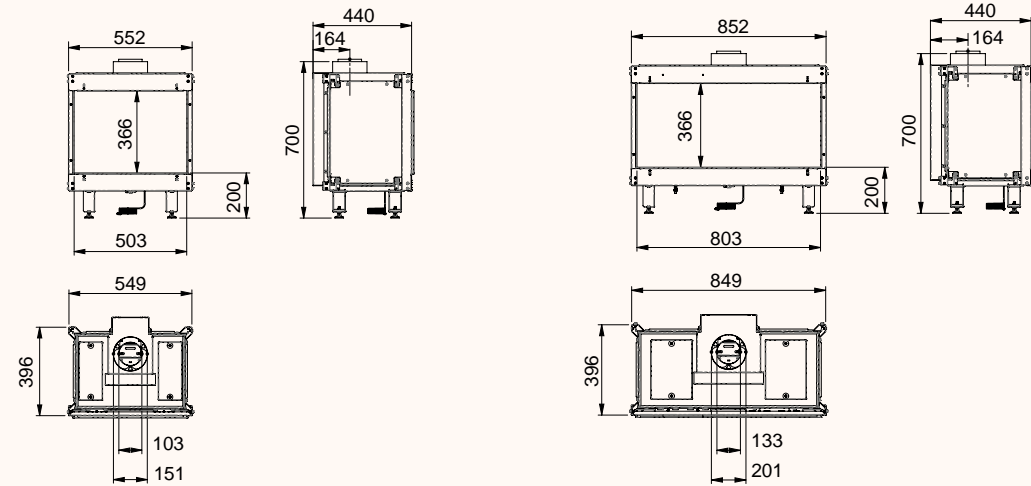
A++  
A+  
A  
B  
C  
D  
E  
F  
G

**wanders**  
fires & stoves

# Danta 500 / 800

Danta 500

Danta 800



Danta 500 ABCDE



Photograph of the Danta 500 AB fireplace in a modern living room setting. The fireplace is white with a black glass front and is set on a white base.

**Danta 500: Black | In: 6,8 kW**

**ECO** 100/150 93,5%

**Danta 800: Black | In: 9,0 kW**

**ECO** 130/200 91,0%

Energy efficiency scale: A++, A+, A, B, C, D, E, F, G. An arrow points to the A+ level.

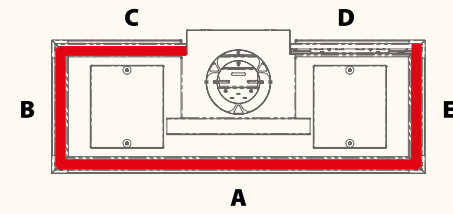
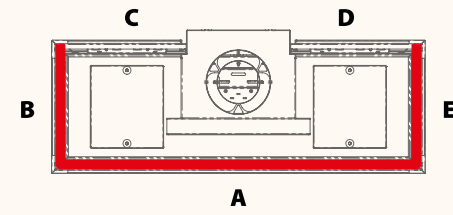
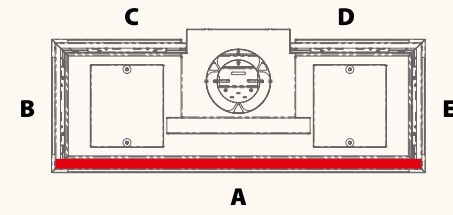
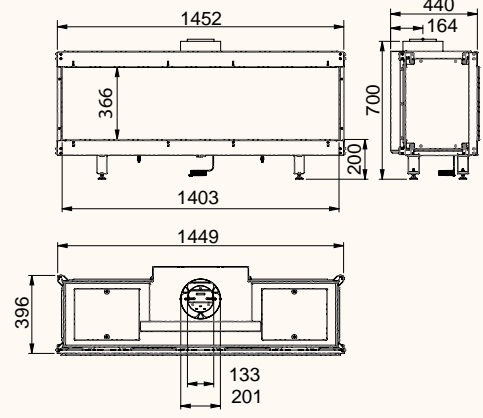
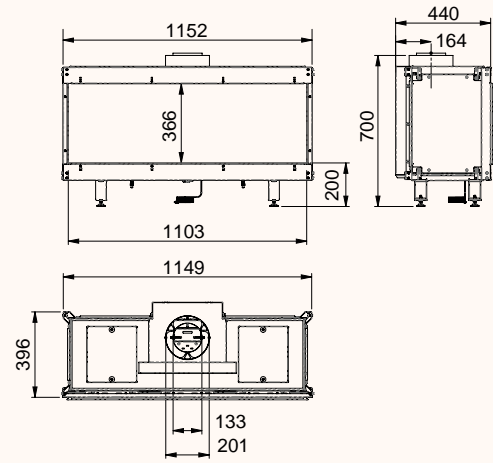
**wanders**  
fires & stoves



# Danta 1100 / 1400

Danta 1100

Danta 1400



Danta 1100: Black | In: 11,7 kW

**ECO** 130/200 93,0

Danta 1400: Black | In: 14,0 kW

**ECO** 130/200 89,8

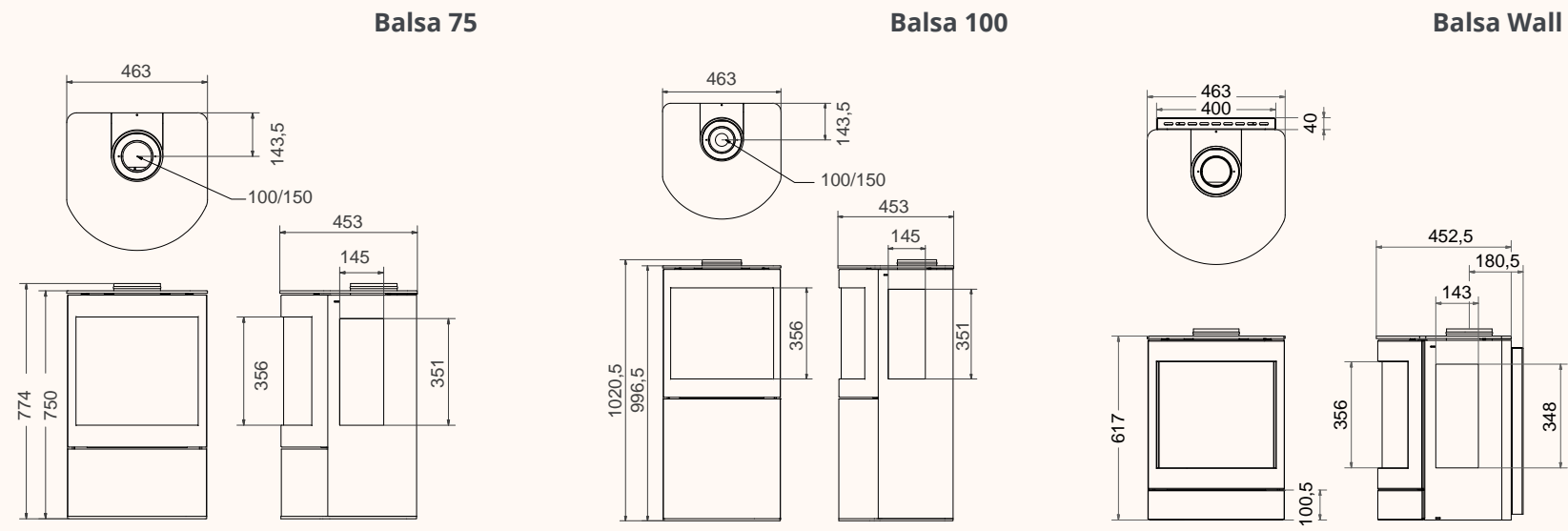
Danta 1100 → A++

Danta 1400 → A

Energy efficiency scale: A++, A+, A, B, C, D, E, F, G

**wanders**  
fires & stoves

# Balsa



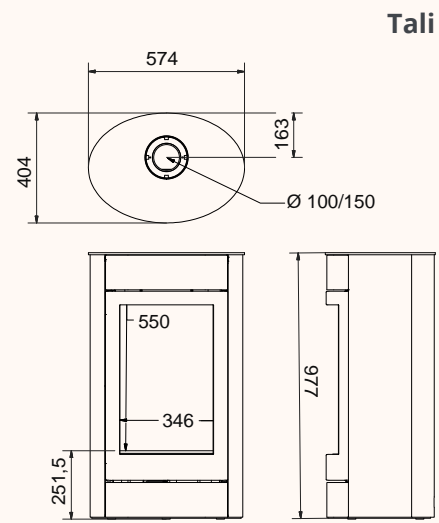
Black | In: 6,2 kW

- 100/150
- 91.7%
- WiFi
- Smart
- Lock
- Control
- Light

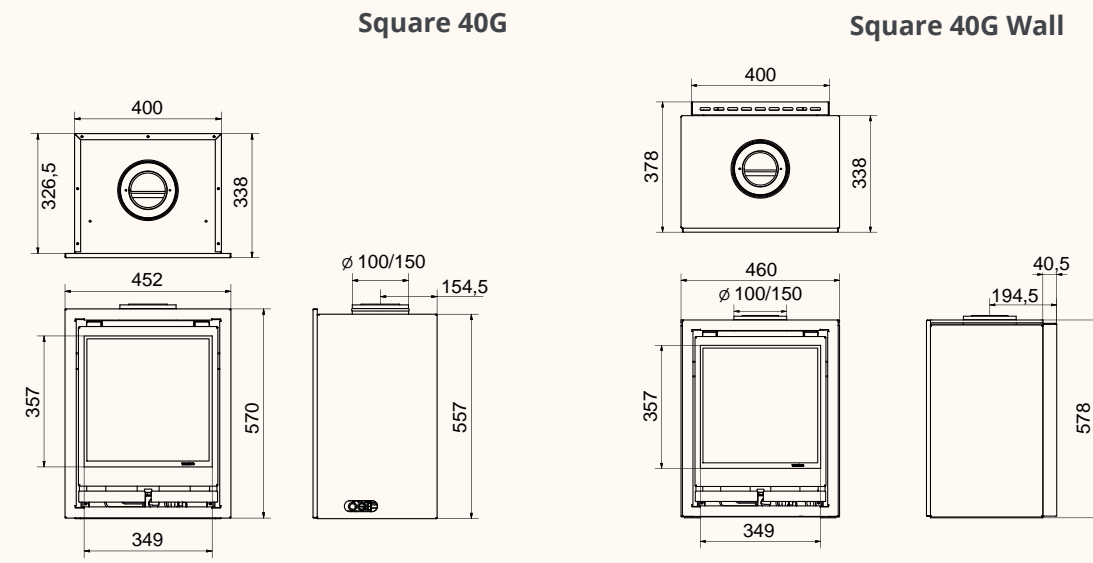
▶ A++  
▶ A+  
▶ A  
▶ B  
▶ C  
▶ D  
▶ E  
▶ F  
▶ G

**wanders**  
fires & stoves

# Tali



# Square 40G



Black | In: 6,0 kW

- Ø 100/150
- 93,8 %
- ECO

**wanders**  
fires & stoves

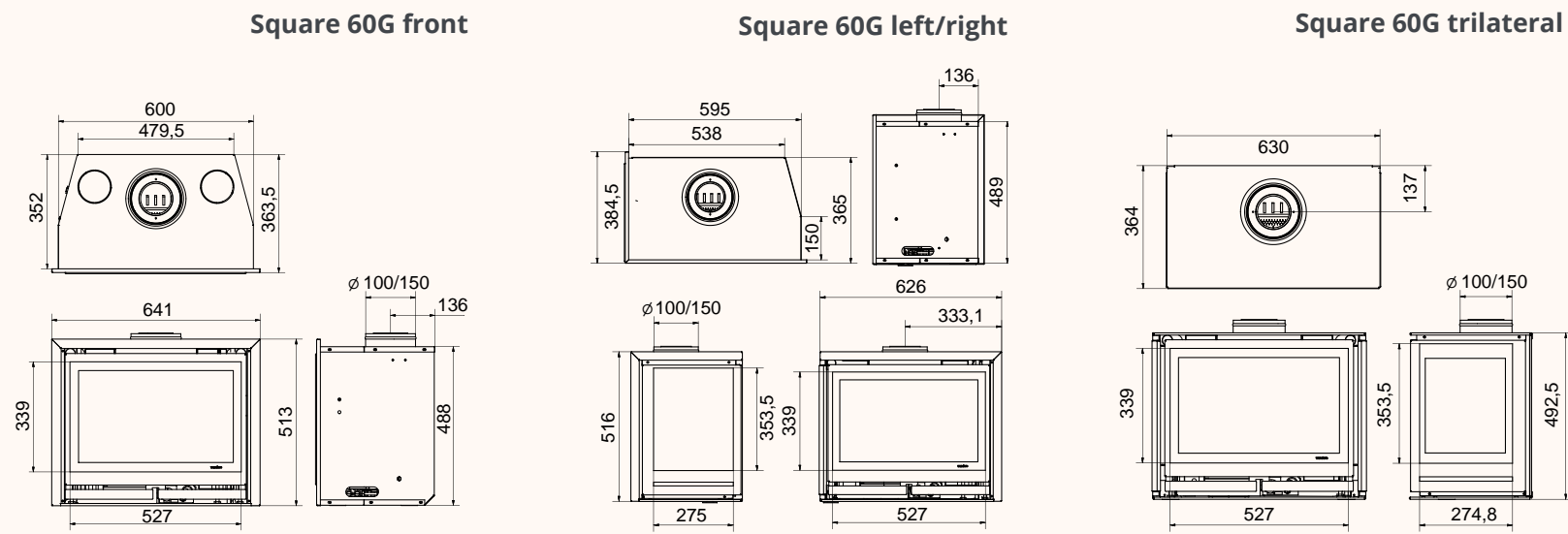


Black | In: 5,3 kW

- Ø 100/150
- 91,2 %
- ECO

**wanders**  
fires & stoves

# Square 60G



**Square 60G trilateral**

Black | In: 4,8 kW

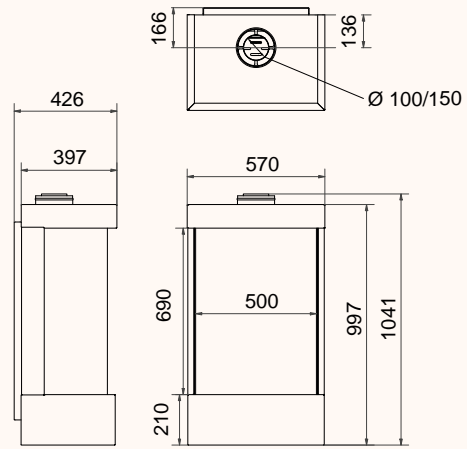
- 100/150
- 91.8
- ECO

Energy efficiency chart showing A++ to G. An arrow points to A+.

**wanders**  
fires & stoves

# Larix

Larix



Black | 6,0 kW

- Ø 100/150
- % 91.8
- ECO

Energy efficiency scale from A++ to G, with an arrow pointing to A+.

**wanders**  
fires & stoves



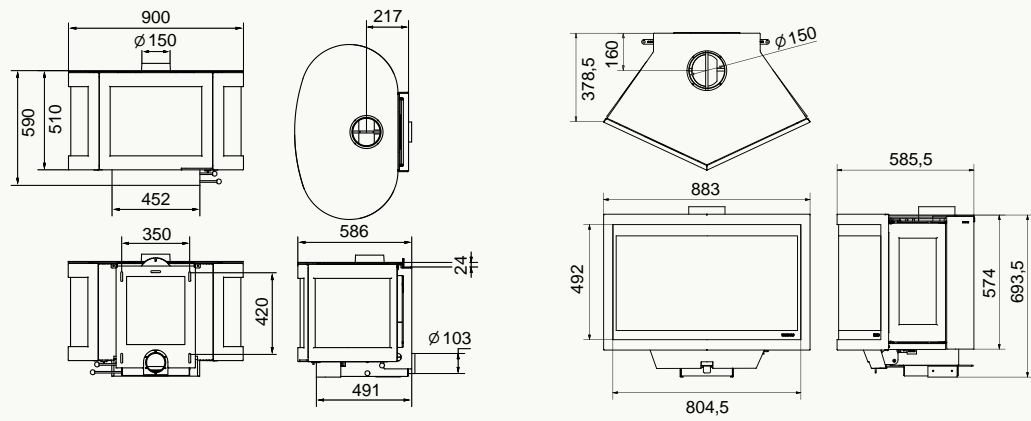
WOOD



# Black Pearl / Black Diamond

Black Pearl

Black Diamond



Black Diamond

Black Pearl: Black | 8-10 kW  
 150 77.7 B<sup>2</sup>

Black Diamond: Black | 8-10 kW  
 150 78.0 B<sup>2</sup>

A photograph of the Black Diamond wood-burning stove with its door open, showing a fire burning inside. To the right is a technical specifications table and an energy efficiency scale.

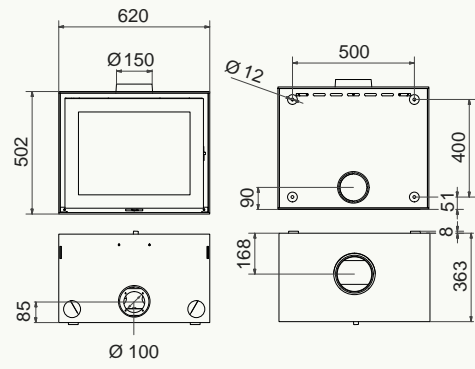
Black Pearl: Black   8-10 kW	150	77.7	B <sup>2</sup>
Black Diamond: Black   8-10 kW	150	78.0	B <sup>2</sup>

Energy efficiency scale (A++ to G) with an arrow pointing to A++.

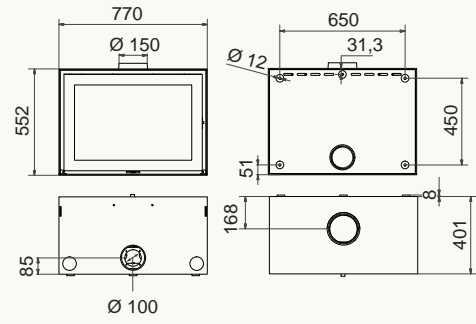
wanders  
fires & stoves

# S Black Edition / Ruby

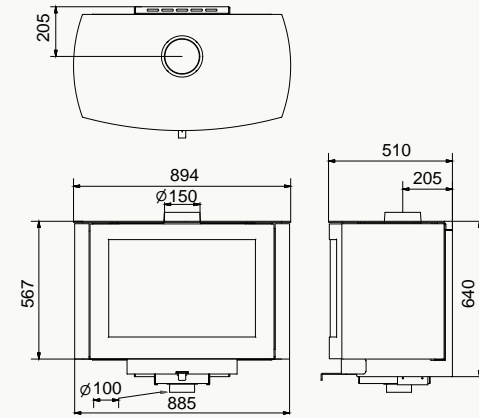
S 60 Black Edition



S 75 Black Edition



Ruby



S 60 Black Edition



Ruby



S 60/75 Black Edition



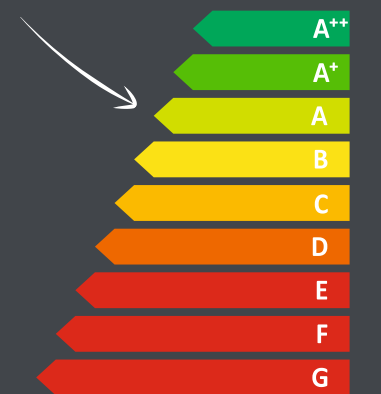
S60 Black Edition: Black | 5-7 kW



S75 Black Edition: Black | 8-10 kW



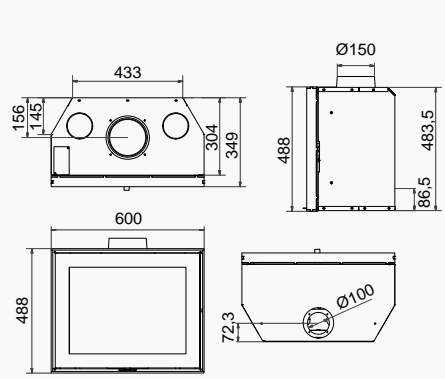
Ruby: Black | 8-10 kW



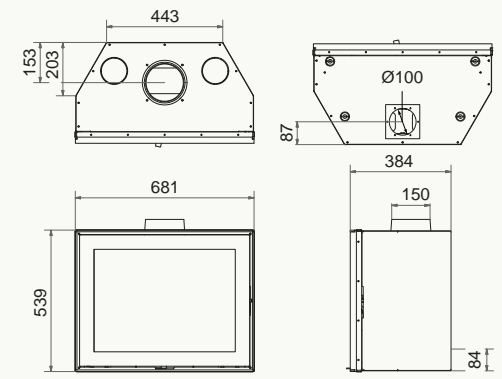


# S 60 / 68 / 75 front

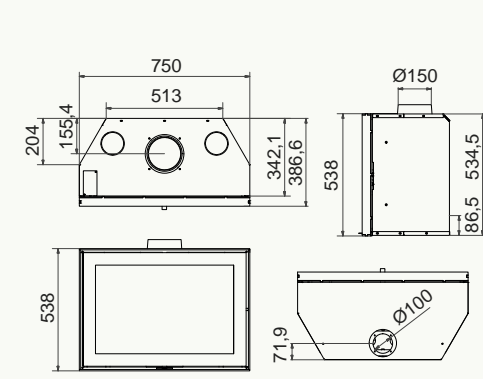
S 60 front



S 68 front



S 75 front



S60 front: Black | 5-7 kW  
 S68 front: Black | 6-8 kW  
 S75 front: Black | 8-10 kW

Ø 150
% 77.0
→
🔌
B<sup>2</sup>

Ø 150
% 79.0
→
🔌
B<sup>2</sup>

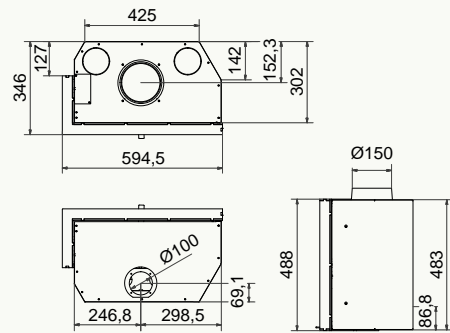
Ø 150
% 75.0
→
🔌
B<sup>2</sup>

➔ A<sup>++</sup>  
➔ A<sup>+</sup>  
➔ A  
➔ B  
➔ C  
➔ D  
➔ E  
➔ F  
➔ G

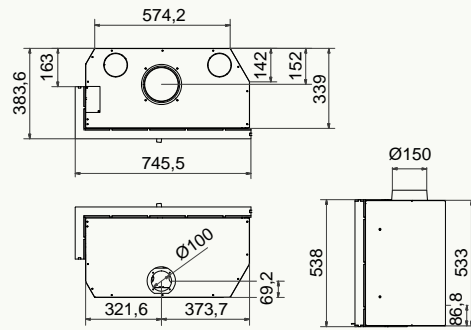
**wanders**  
 fires & stoves

# S 60 / 75 corner

S 60 corner



S 75 corner



S 75 corner



S 60 corner



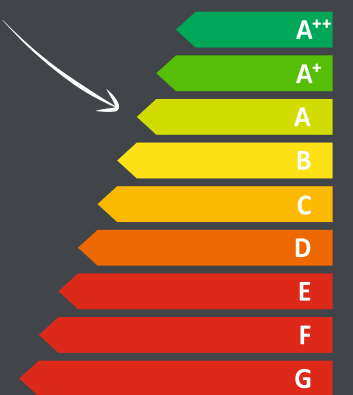
S 75 corner



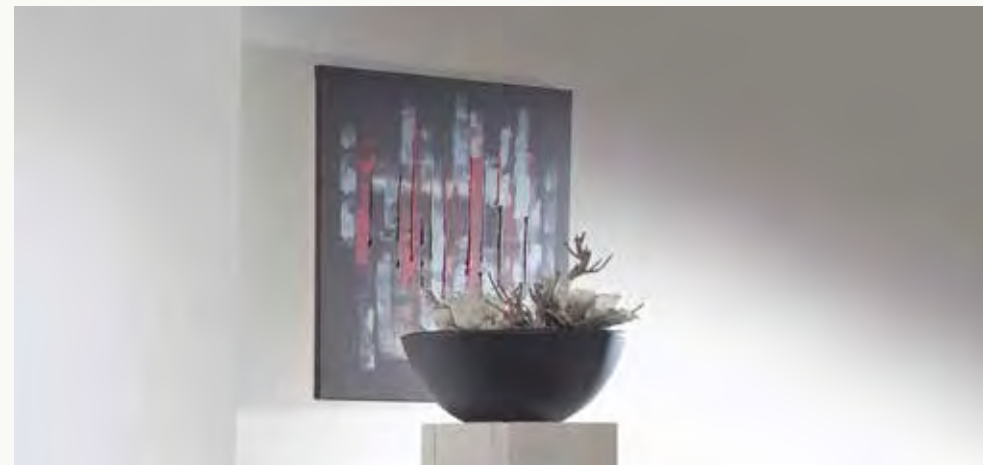
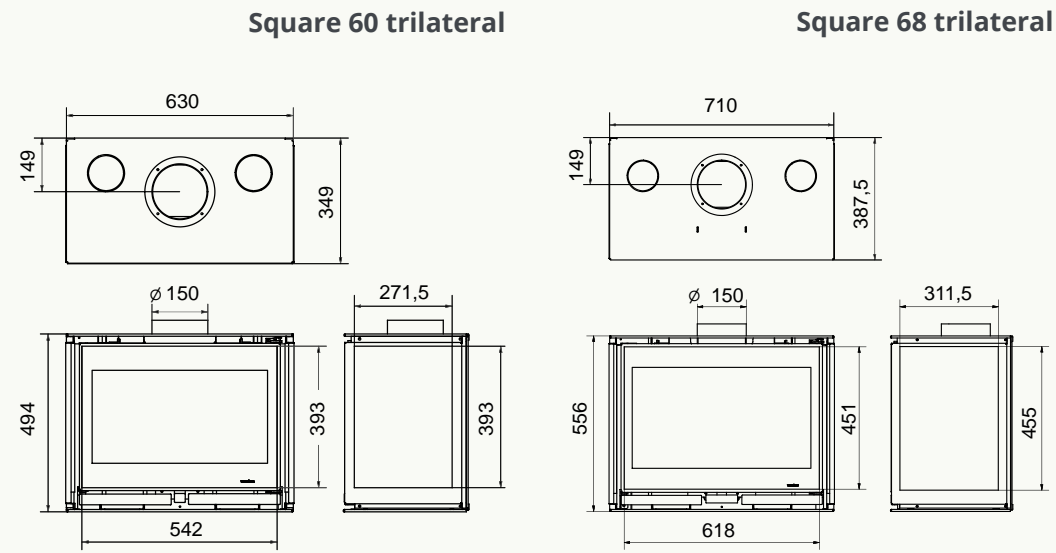
S60 corner: Black | 5-7 kW



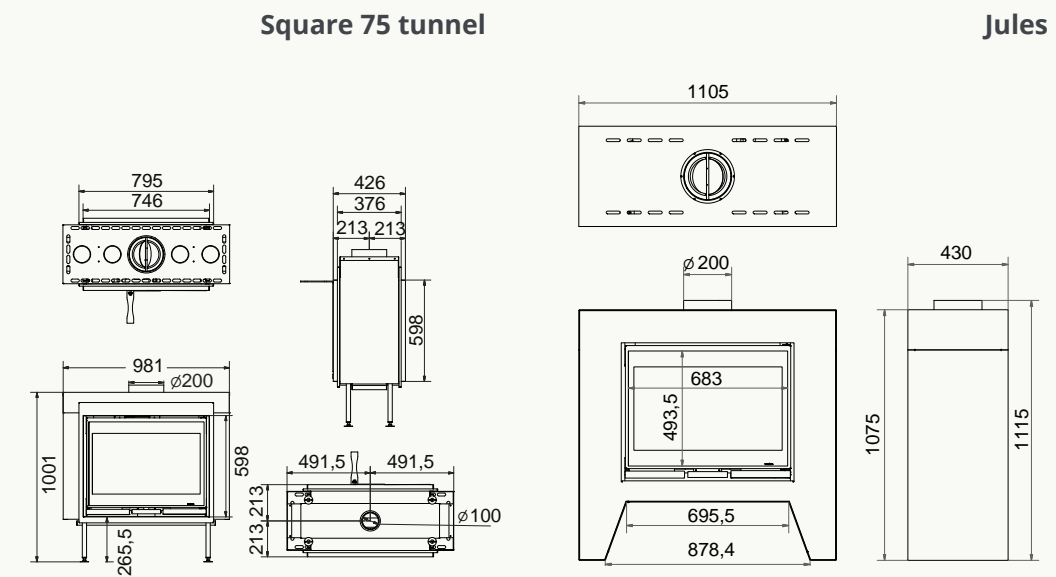
S75 corner: Black | 8-10 kW



# Square 60 / 68 trilateral



# Square 75 tunnel / Jules



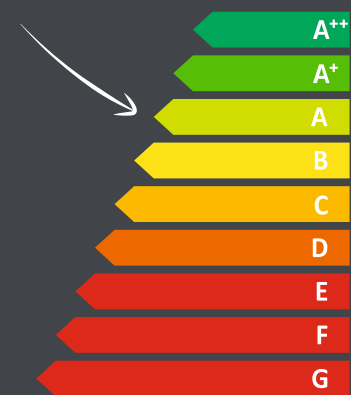
Square 60 trilateral



Square 60 trilateral Black | 5-7 kW



Square 68 trilateral Black | 7-9 kW



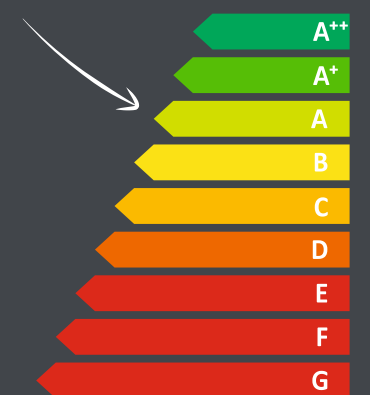
Jules



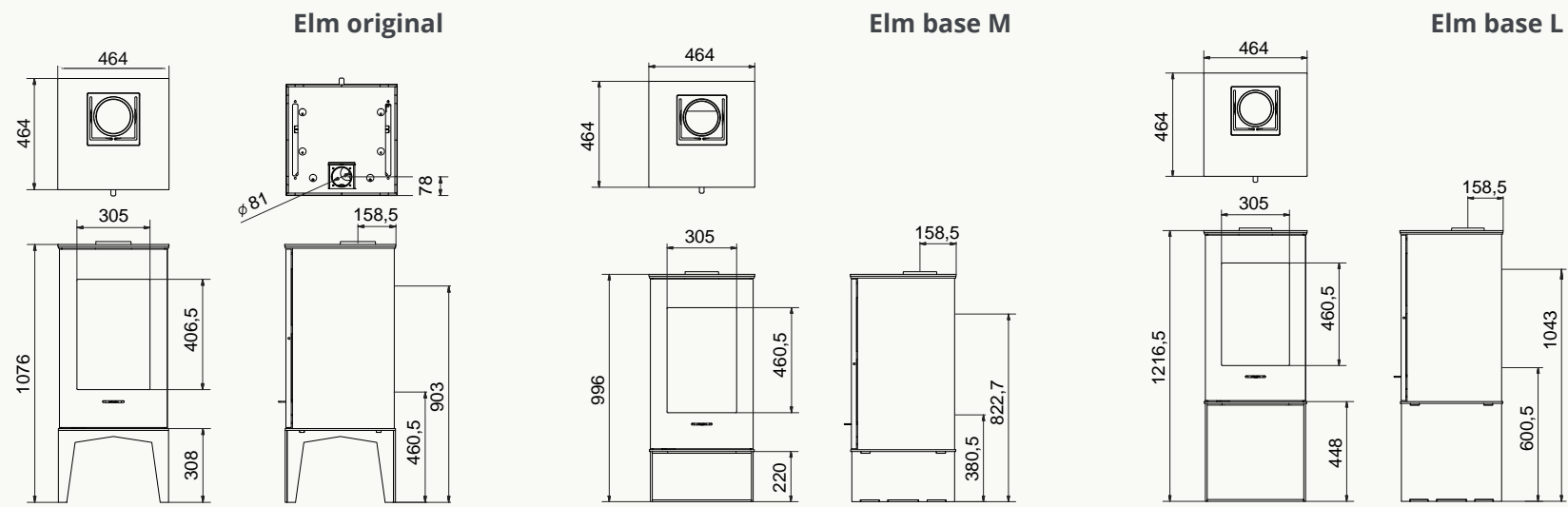
Square 75 tunnel: Black | 10-12 kW



Jules: Black | 10-12 kW



# Elm

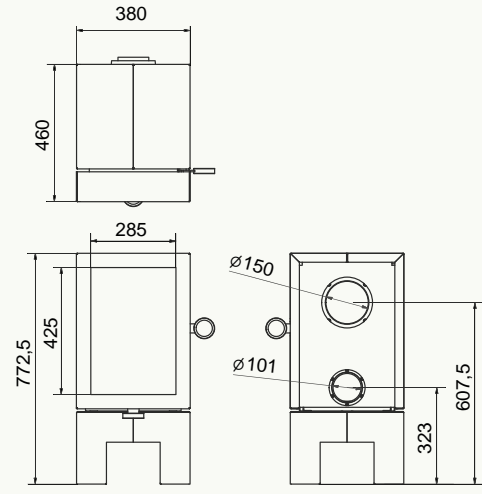


Elm: Black | 5-7 kW

**wanders**  
 fires & stoves

# Oak

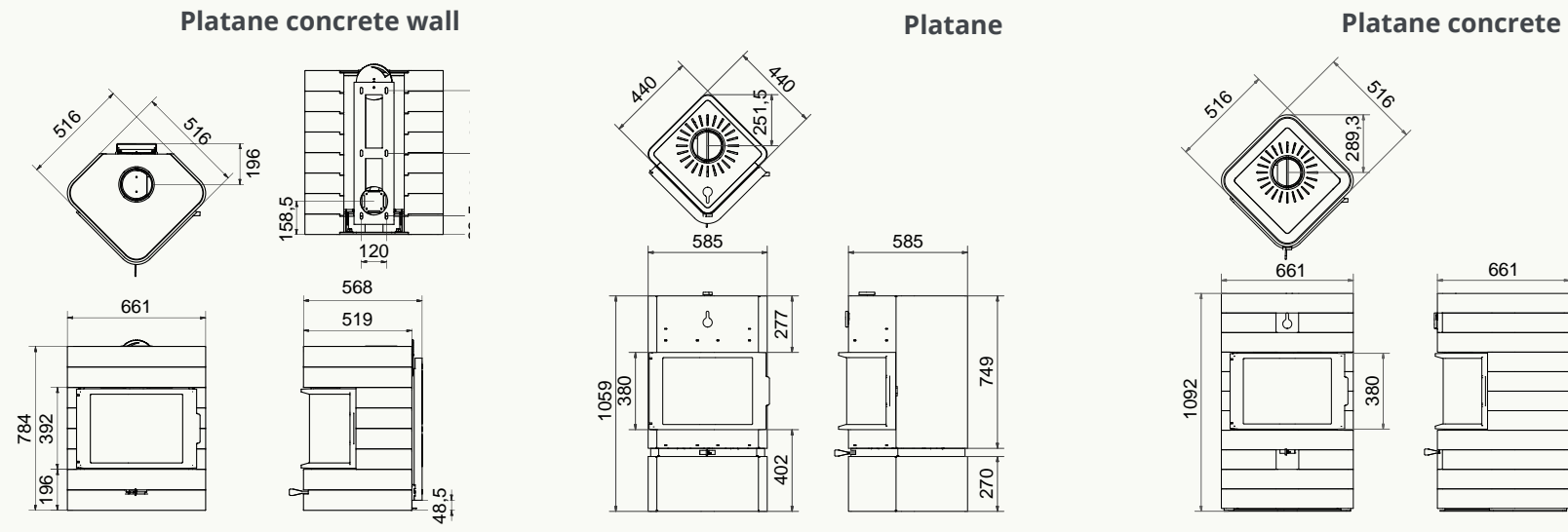
Oak



Black | 4-6 kW

**wanders**  
 fires & stoves

# Platane



**Platane**

Black | 5-7 kW

150 80,0 B<sup>2</sup>

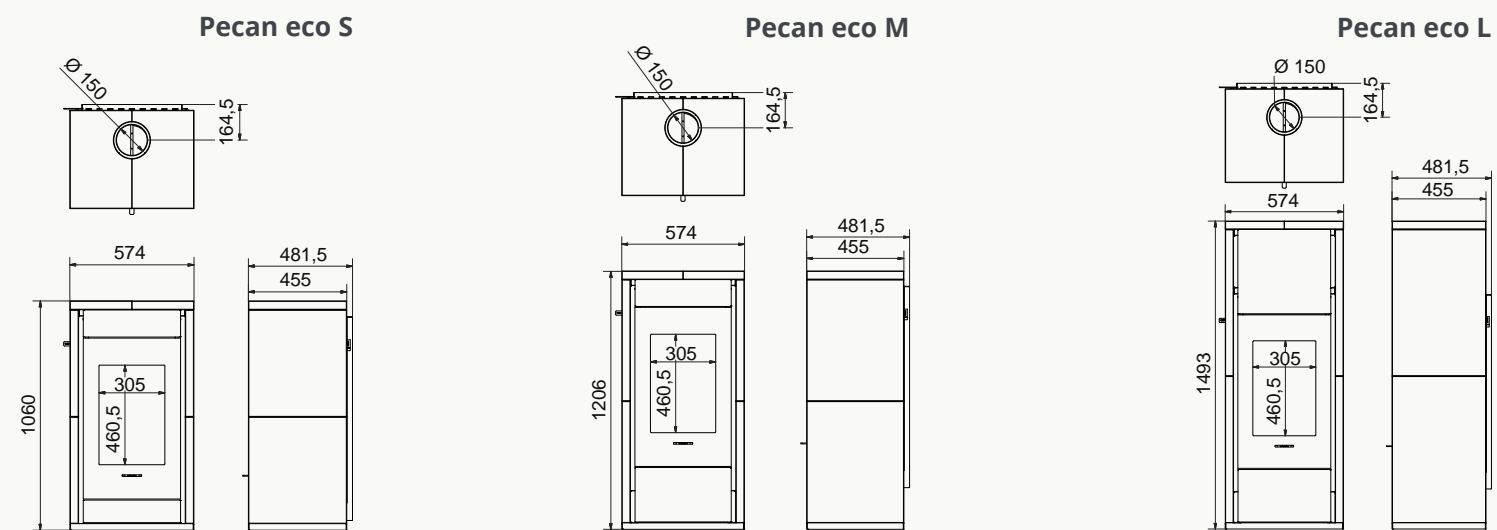
Hi<sup>2</sup>

Energy efficiency scale:

- A<sup>++</sup>
- A<sup>+</sup>
- A
- B
- C
- D
- E
- F
- G

wanders  
fires & stoves

# Pecan eco



Black | 5-8 kW

Ø 150, % 82,0, B<sup>2</sup>

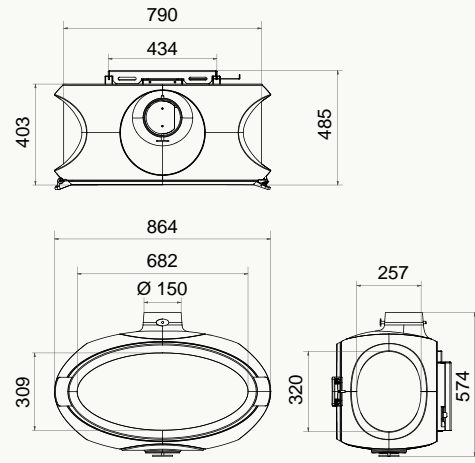
Hi<sup>2</sup>

- A<sup>++</sup>
- A<sup>+</sup>
- A
- B
- C
- D
- E
- F
- G

**wanders**  
fires & stoves

# Mata

Mata



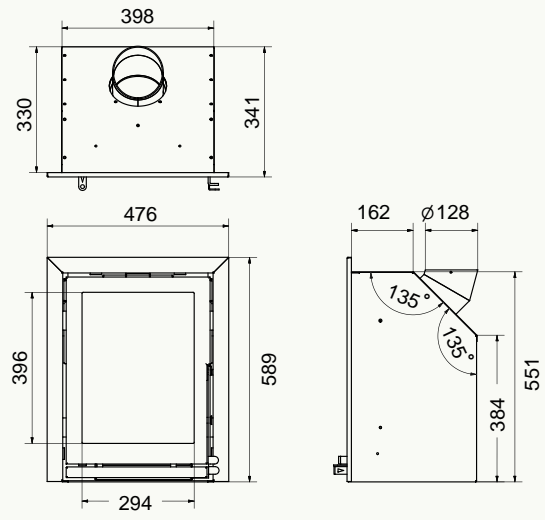
Black | 7,7 kW

**wanders**  
 fires & stoves



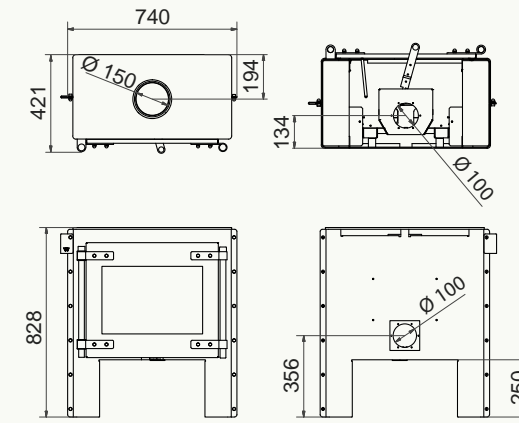
# Marvic

Marvic



# Peppel

Peppel



Marvic

Black | 4-6 kW

Ø 150 % 82,0

Hi<sup>2</sup>

A++  
A+  
A  
B  
C  
D  
E  
F  
G

wanders  
fires & stoves



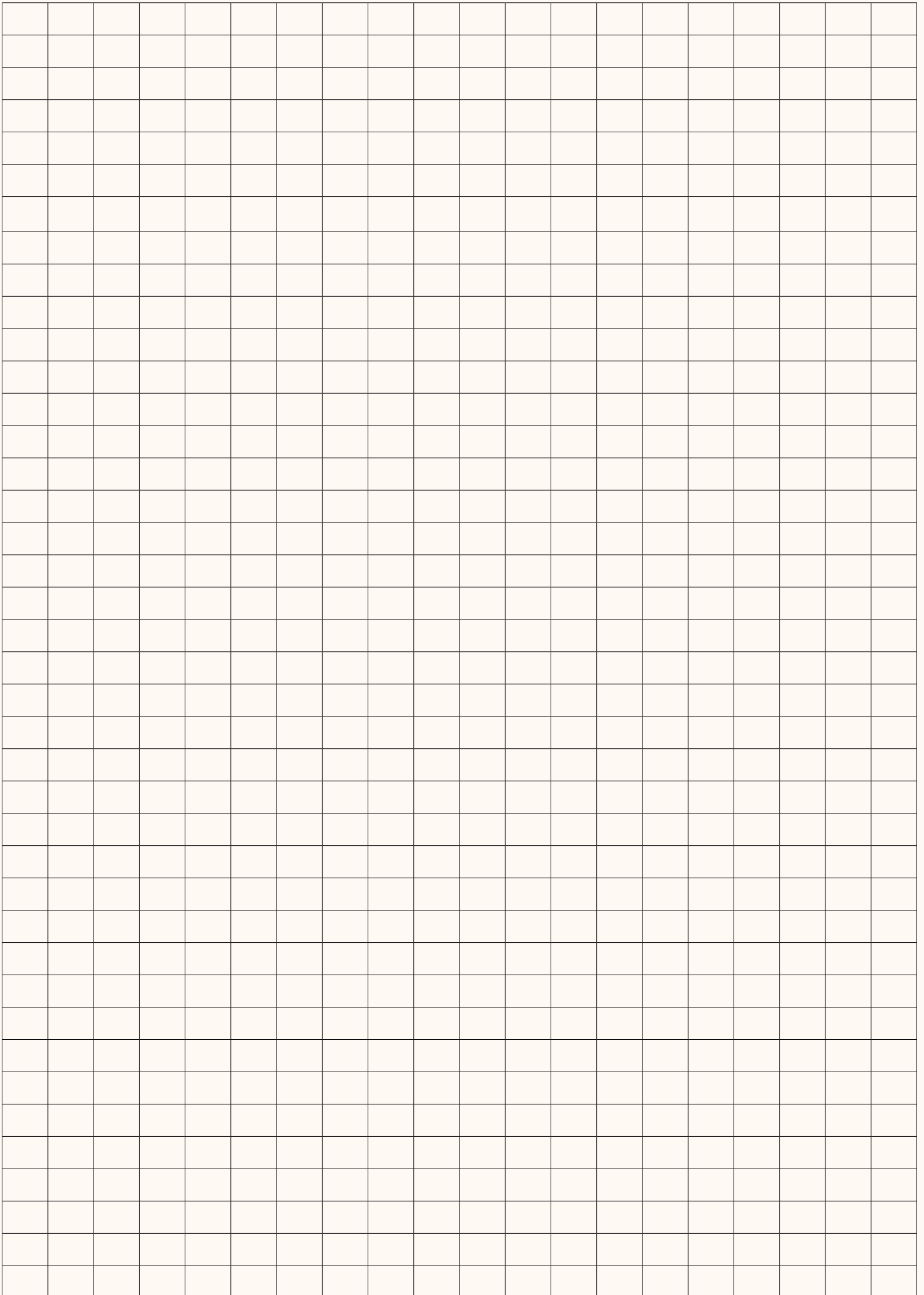
Peppel

Black | 5-7 kW

Ø 150 % 77,0

A++  
A+  
A  
B  
C  
D  
E  
F  
G

wanders  
fires & stoves





**wanders**  
fires & stoves



Amtweg 4, NL-7077 AL Netterden  
The Netherlands  
T +31 (0)315 - 386 414  
E [info@wanders.com](mailto:info@wanders.com)  
I [www.wanders.com](http://www.wanders.com)